

Self-Priming Auto Pump ADGP Series

- Suitable for Household & Domestic applications i.e. house not exceed three storeys.
- Suitable for clean water suction from tank or basin and places where pressure is too low.



Application

- The motor casing is of a finned design, compact design, space saving installation, light weight.
- Pump casing made with cast iron strong and durable.
- Mechanical seal Ceramic-Ceramic.
- Shaft made of SUS304, no rust
- Built-in cooling fan extent motor' s lifespan.
- The power cord comes with 1.2-meter long plug
- Ground wire for best protection

Model information



Feature



Genuine Copper coil with Thermal Overload Protection



Brass impeller : Turbine impeller , corrosion resistant, no rust, weatherproof

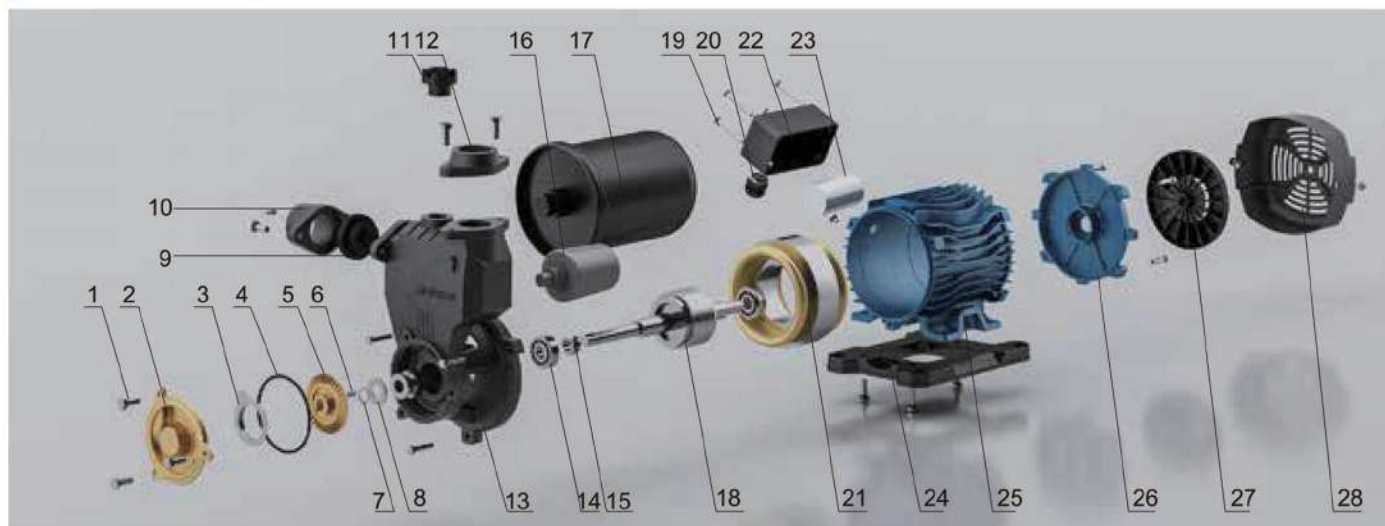


Pressure switch: control the pressure and energy saving



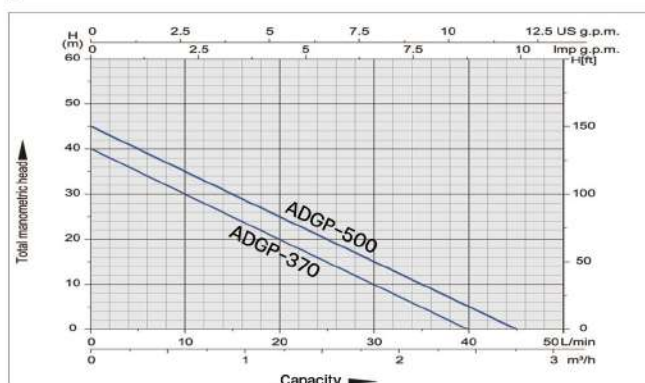
Diaphragm pressure tank : Preserve stable water pressure and energy saving

Model analysis

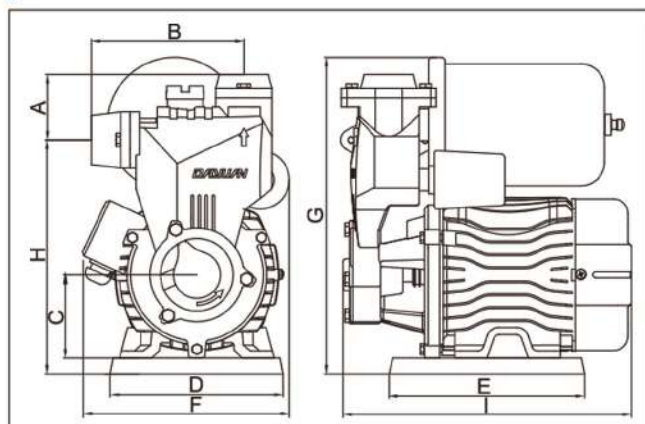


NO.	Component	NO.	Component	NO.	Component	NO.	Component
1	Hexagonal head Bolt	8	Washer	15	Water thrower	22	Junction Box
2	Pump Cover	9	Check valve	16	Pressure switch	23	Capacitor
3	Insert	10	Inlet connector	17	Pressure tank	24	Support
4	O-Ring	11	Water plug	18	Rotor	25	Pump base
5	Impeller	12	Outlet connector	19	Phillips screw	26	Rear end cover
6	Flat key	13	Pump body	20	Black four-piece suit	27	Fan
7	Snap ring	14	Bearing	21	Stator	28	Fan cover

Performance curves



Installation method and size



Model	A (mm)	B (mm)	C (mm)	D (mm)	E (mm)	F (mm)	G (mm)	H (mm)	I (mm)
ADGP-370	56	122	71	156	217	176	271	201	246
ADGP-500	59.5	141	71	156	217	176	271	218	246

Specifications

Model	ADGP-370	ADGP-500
Power (W)	370	500
Cycle (Hz)	50	50
Voltage (V)	220-230	220-230
Amp (A)	2.5	4.2
Max Head (M)	40	45
Max Flow rate (LPM)	40	45
Max suction (M)	8	8
Pressure (Kg/cm ²)	1.8-2.8	2.2-3.2
Inlet (in.)	1	1
Outlet (in.)	1	1
N.W. (kg)	8	9
G.W. (kg)	10	11
Packaging size (mm)	290*200*310	285*205*305

Executive agent :