

# Centrifugal Pump

## DCM Series

- Suitable for Household & Domestic applications
- Pressure boosting for Agriculture irrigation , Household & Domestic application
- suitable for both indoor and outdoor installation



### Application

- Pump casing made with high-quality materials, strong, durable with flange design and threaded design
- Low noise operation and constant water pressure.
- Bearings are water and dustproof.
- Built-in cooling fan extent motor's lifespan.
- Compact design, small size, easy installation and easy to maintenances.
- Ground wire for best protection

### Model information

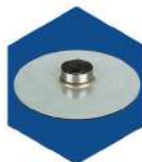
DCM - 158

— Impeller Nominal Diameter (mm)  
 — Model

### Feature



Genuine Copper coil with Thermal Overload Protection



Stainless : closed impeller , no rust, Provides high water flow and high water pressure .

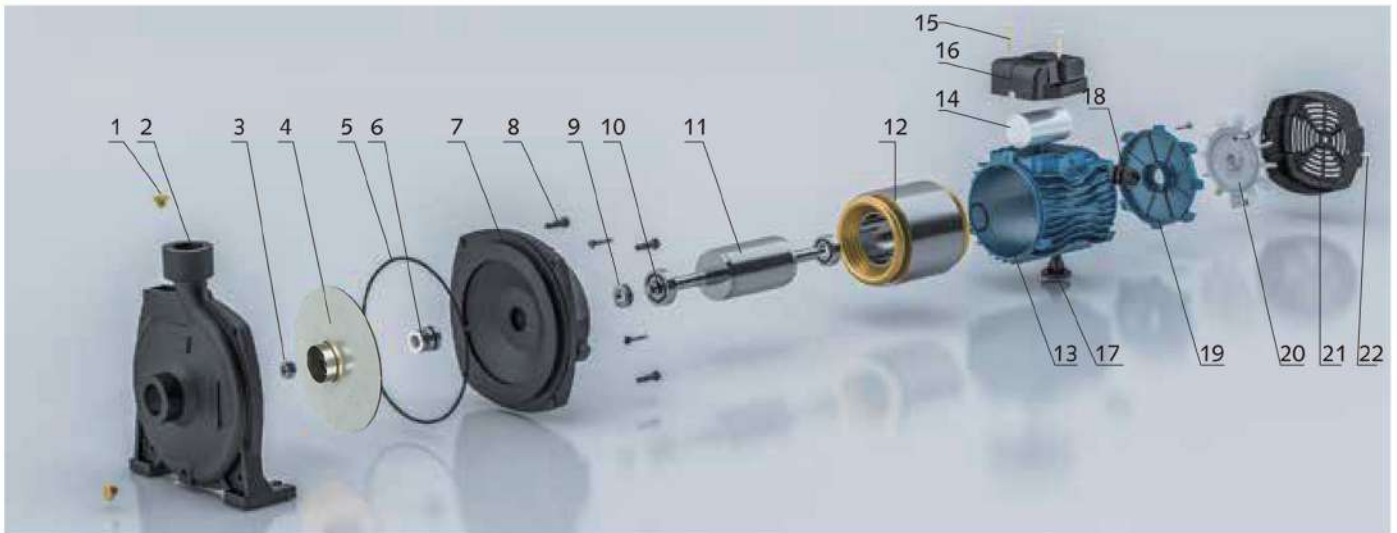


Rotor made of AISI304 corrosion resistant



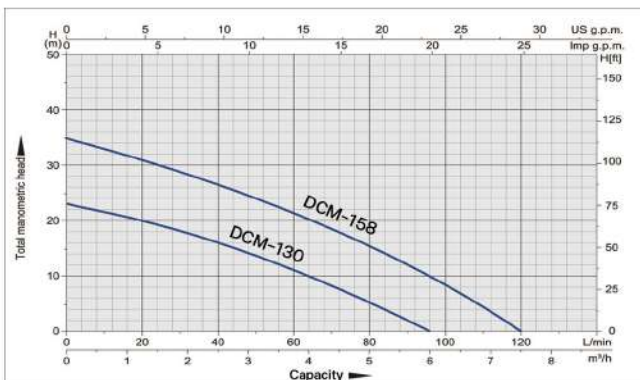
Mechanical seal Ceramic-Carbon, Prevents leakage, capable of withstanding pressure, heat-resistant.

## Model analysis



NO.	Component	NO.	Component	NO.	Component	NO.	Component
1	Bleed screw	7	Connector	13	Pump base	19	Wave washer
2	Pump body	8	Hexagonal head bolt	14	Capacitor	20	Fan
3	Nut	9	Water thrower	15	Phillips screw	21	Fan cover
4	Impeller	10	Bearing	16	Junction box	22	Fan cover screw
5	O-Ring	11	Rotor	17	Arm-base		
6	Mechanical seal	12	Stator	18	Four-piece suit		

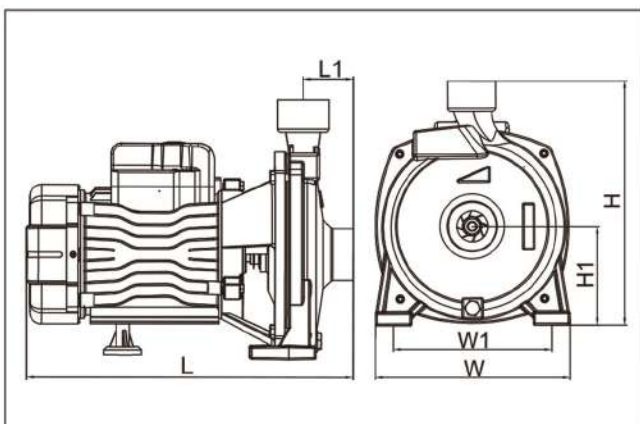
## Performance curves



## Specifications

Model	DCM-130	DCM-158
Power (W)	370	750 (1HP)
Cycle (Hz)	50	50
Voltage (V)	220-230	220-230
Amp (A)	2.9	5.2
Max Head (M)	23	35
Max Flow rate (LPM)	90	120
Max suction (M)	8	8
Inlet (in.)	1	1
Outlet (in.)	1	1
N.W. (kg)	8.7	13
G.W. (kg)	9.2	13.5
Protection class	IP44	IP44
Packaging size (mm)	285*175*235	330*205*270

## Installation method and size



Model	L (mm)	L1 (mm)	W (mm)	W1 (mm)	H (mm)	H1 (mm)
DCM-130	260	42	167	130	216	87.5
DCM-158	303.5	47	192	159	242	98.5

Executive agent :