

Centrifugal Pump

DHM Series

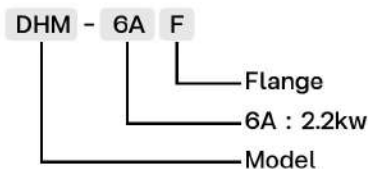


- Pressure boosting for Agriculture irrigation , Household & Domestic application
- suitable for both indoor and outdoor installation

Application

- Pump casing made with high-quality materials, strong, durable with flange design and threaded design
- Low noise operation and constant water pressure.
- Bearings are water and dustproof.
- Built-in cooling fan extent motor's lifespan.
- Compact design, small size, easy installation and easy to maintenances.
- Ground wire for best protection

Model information



Feature



Genuine Copper coil with Thermal Overload Protection



Brass impeller : closed impeller , no rust, Provides high water flow and high water pressure .

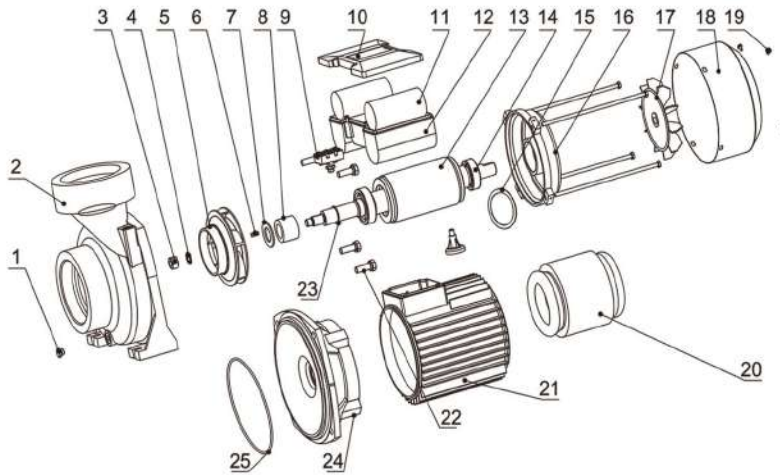


Rotor made of AISI304 corrosion resistant



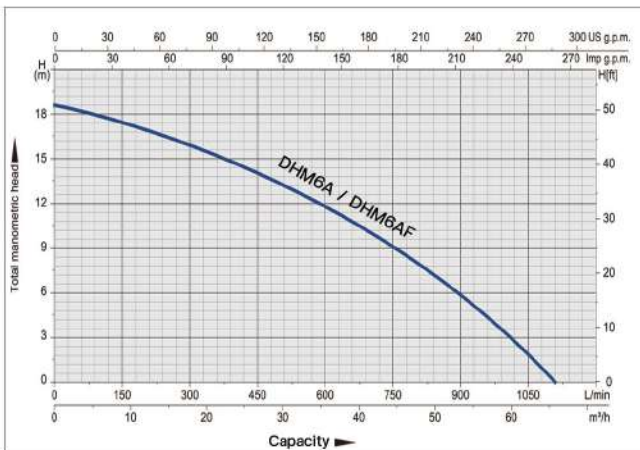
Mechanical seal Ceramic-Ceramic, Prevents leakage, capable of withstanding pressure, heat-resistant.

Model analysis



01	The drain screw	14	Bearing
02	Pump body	15	Wave washer
03	Nut	16	End cover
04	Inner teeth locking gasket	17	Fan
05	Impeller	18	Fan cover
06	Flat key	19	Bolt
07	Flat washer	20	Stator
08	Mechanical seal	21	Motor base
09	Wiring terminal	22	Bolt
10	Junction box cover	23	Snap ring
11	Capacitor	24	Connect
12	Junction box case	25	O-Ring
13	Rotor		

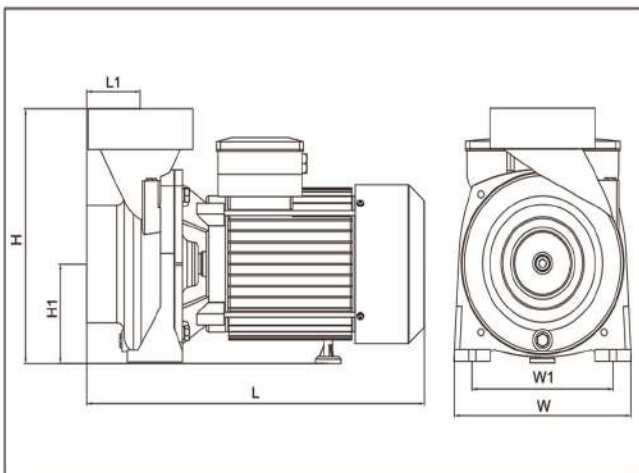
Performance curves



Specifications

Model	DHM6A	DHM6AF
Power (W)	2200 (3HP)	2200 (3HP)
Cycle (Hz)	50	50
Voltage (V)	220-230	220-230
Amp (A)	15.1	15.1
Max Head (M)	18.5	18.5
Max Flow rate (LPM)	1100	1100
Max suction (M)	8	8
Inlet (in.)	3	3
Outlet (in.)	3	3
Type of Outlet	Thread	Flange
N.W. (kg)	35	39
G.W. (kg)	37	41
Packaging size (mm)	480*280*320	480*280*320

Installation method and size



Model	L (mm)	L1 (mm)	W (mm)	W1 (mm)	H (mm)	H1 (mm)
DHM6A	260	42	167	130	216	87.5
DHM6AF	303.5	47	192	159	242	98.5

Executive agent :