

Self-Priming Jet Pump

JET(SC) Series

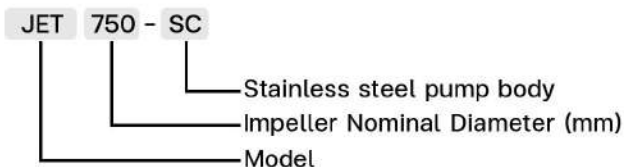


- Suitable for Reverse Osmosis system (R.O)
- Long-distance water transfer or high-level water transfer.
- Suitable for Agriculture irrigation , Household & Domestic application

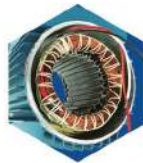
Application

- Stainless impeller and stainless pump body: No rust, helps pressure boosting , Provides high water flow
- Diffuser helps pressure boosting
- Pump casing made with high-quality materials, strong, durable with flange design and threaded design
- Low noise operation and constant water pressure.
- Bearings are water and dustproof.
- Built-in cooling fan extent motor' s lifespan.
- Compact design, small size, easy installation and easy to maintenances.
- Ground wire for best protection

Model information



Feature



Genuine Copper coil with Thermal Overload Protection



Stainless impeller : closed impeller , no rust, Provides high water flow and high water pressure .

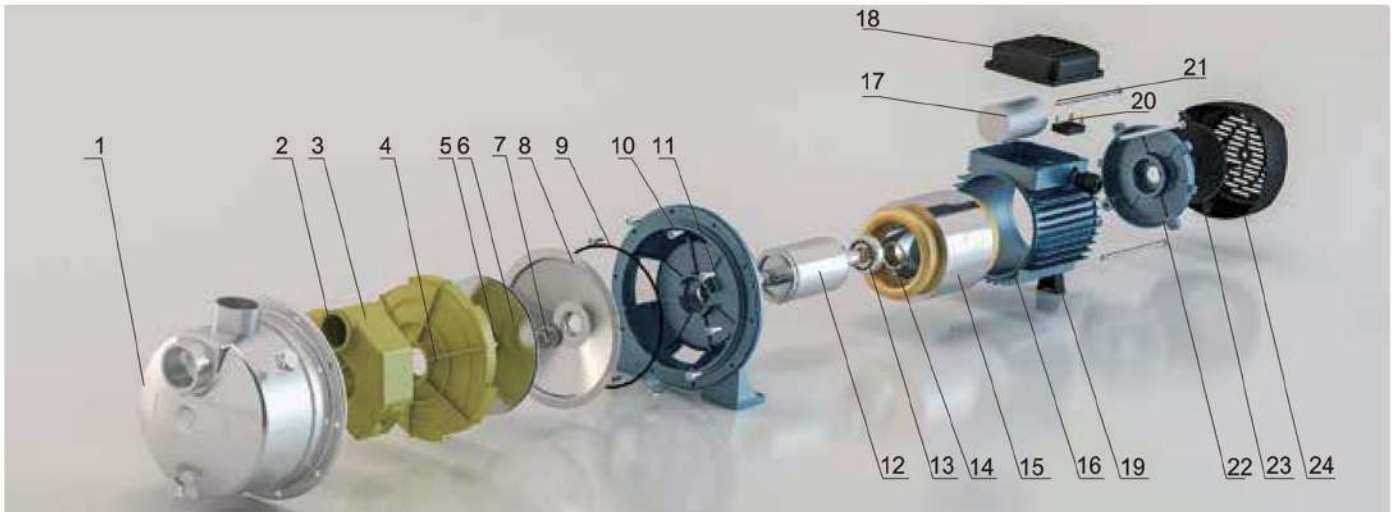


Rotor made of AISI304 corrosion resistant



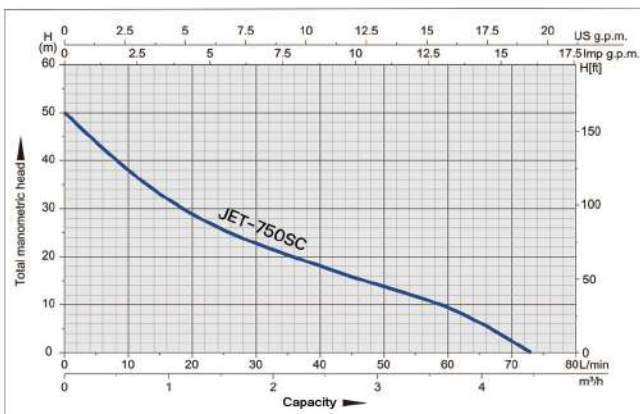
Mechanical seal Ceramic-Carbon, Prevents leakage, capable of withstanding pressure, heat-resistant.

Model analysis



NO.	Component	NO.	Component	NO.	Component	NO.	Component
1	Pump body	7	Mechanical seal	13	Bearing	19	Arm-brace
2	Gasket	8	Pump cover	14	Wave washer	20	Wiring terminal
3	Ejector	9	O-Ring	15	Stator	21	Bolt
4	Diffuser	10	Bolt	16	Pump base	22	Rear end cover
5	Nut	11	Connector	17	Capacitor	23	Fan
6	Impeller	12	Rotor	18	Junction box	24	Fan cover

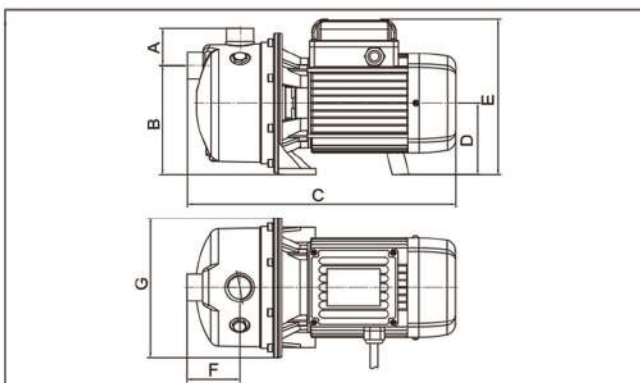
Performance curves



Specifications

Model	JET-750SC
Power (W)	750 (1HP)
Cycle (Hz)	50
Voltage (V)	220-230
Amp (A)	5.2
Max Head (M)	50
Max Distance (M)	500
Max Flow rate (LPM)	73
Max suction (M)	8
Inlet (in.)	1
Outlet (in.)	1
N.W. (kg)	10
G.W. (kg)	10.5
Packaging size (mm)	390*220*250

Installation method and size



Model	A (mm)	B (mm)	C (mm)	D (mm)	E (mm)	F (mm)	G (mm)
JET750SC	49	145	360	95	207	72	186

Executive agent :