

Submersible Sewage Pump

LQS Series

- For usage of industry, agriculture, mine, building construction, environmental protection. Fit for carrying slurry, mortar, daily sanitary wastewater, and sewage containing flocks, papers, mud and sand and other solid particles. Also fit for dredging
- Drain flood water



Type of Impeller



Non-Clog Impeller

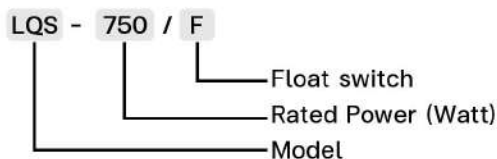


Cast iron Impeller
(LQS1100 Only)

Application

- Aluminum pump casing, light weigh, compact design, easy for installation, convenient carrying handle.
- Quiet operation and constant pressure.
- Low noise operation and constant water pressure.
- Bearings are water and dustproof.
- Ground wire for best protection.

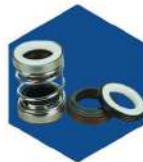
Model information



Feature



Genuine Copper coil with Thermal Overload Protection



Mechanical seal Ceramic- Graphite, Prevents leakage, capable of withstanding pressure, heat-resistant.



Float switch as a sensor for water level measurement, make pump operation to the desired water level set by the user.

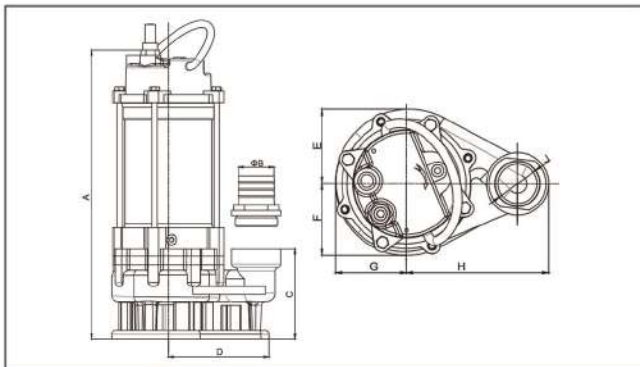


Pump casing made with aluminum strong and durable.

Specifications

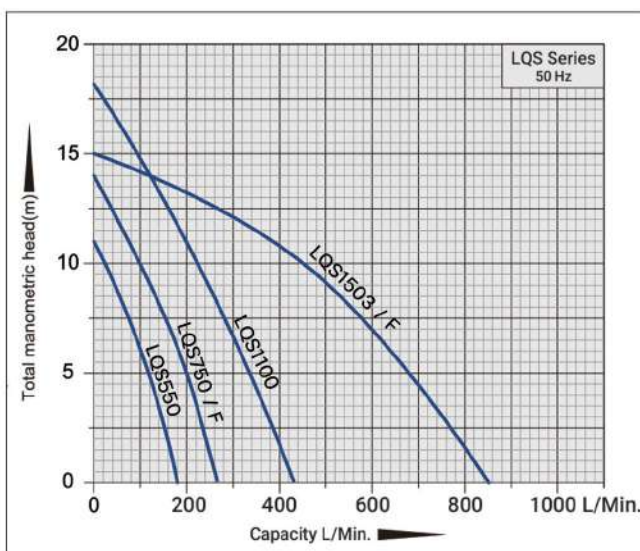
Model	LQS550	LQS750 / F	LQS1100	LQS1503 / F
Power (W)	550	750 (1HP)	1100 (1.5HP)	1500 (2HP)
Cycle (Hz)	50	50	50	50
Voltage (V)	220-230	220-230	220-230	220-230
Amp (A)	4.1	5.2	7.3	9.5
Max Head (M)	11	14	18	15
Max Flow rate (LPM)	190	265	415	850
Outlet (in.)	1.5	2	2	3
N.W. (kg)	20	21.5	23.5	28
G.W. (kg)	21	22.5	24.5	30
Packaging size (mm)	487*280*203	487*280*203	560*290*228	580*240*290

Installation method and size

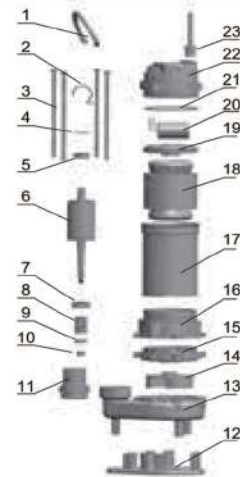


Model	A (mm)	B (mm)	C (mm)	D (mm)	E (mm)	F (mm)	G (mm)	H (mm)
LQS550	387	40/51	128	143	84	78	80	160
LQS750 / F	407	51/64	128	143	84	78	80	160
LQS1100	463	51	137	143	89	83	86	153
LQS1503 / F	463	51	137	143	89	83	86	153

Performance curves



Model analysis



01	Handle	13	Pump body
02	Capacitor clamp	14	Impeller
03	Long screw	15	Oil chamber cap
04	Wave washer	16	Oil chamber
05	Deep groove ball bearing	17	Pump base
06	Rotor	18	Stator
07	Deep groove ball bearing	19	Upper housing
08	Mechanical Seal	20	Capacitor
09	Skeleton oil seal	21	O-Ring
10	Hex nuts	22	Top cover
11	Outlet	23	Cable
12	Baseplate		

Executive agent :