



WALRUS
PUMP

New

Antimicrobial Electronic Control Pump

The new feature of TQ_B/BC series with adding silver ion to the pump casing has been scientifically proven to inhibit microbial growth by 99% over a 24-hour period.

Ag⁺



TQ_B/BC Series
Electronic Control Pump





Silver Ion Test Report

- ✓ When positively-charged silver ions meet the negatively-charged microbial cells, silver ions will pierce through the surfaces of bacterial cells, damaging their structure and inhibiting bacterial reproduction.
- ✓ The silver ions feature applied to the pump casting will provide an excellent bacterial-inhibiting effect.

Per **SGS** test results adding
silver ion could effectively restrict those growth.

*Test report number: No. UG/2020/21687A-01, 21688A-01, 21689A-01

99%

E. coli

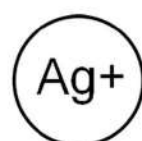
87%

S. aureus

95%

Bacillus subtilis

Peace of Mind



Silver Ions

Silver ions applied to inhibit bacterial and moss growth. SGS inspection-certified.



RoHS 2.0

iPhone-worthy safety standards- and RoHS-compliant, the pumps are made with no hazardous substances for humans and the environment.



Stainless steel

Equipped with stainless steel and FRP materials to prevent rust & water contamination



CE

Certification standards for health, safety, and environmental protection to ensure conformity with all relevant EU-wide requirements.

Low Noise Guaranteed

Noise level tested & validated



Approx.
55 db.
with TQ_B/BC Series



Start-up noise eliminated with microcomputer voltage stabilizer

TQ_B/BC Series for home

Multistage centrifugal stainless-steel impellers inside to deliver superior quietness

Pump & Motor Labs

- The only lab in Taiwan with TAF, TUV & ILAC certifications. Premium quality assured.
- One-and-only firm in Taiwan with "motor + pump" R&D expertise, a unique approach to pump optimization
- Motor efficiency up to IE4, recognized by Taiwan Excellent Motor Award—Energy-Saving Category

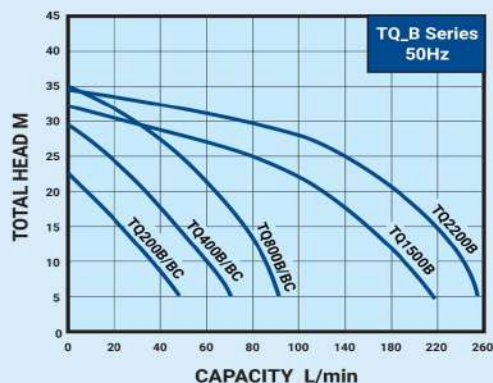


Motor Laboratory



Pump Performance Laboratory

Performance curve



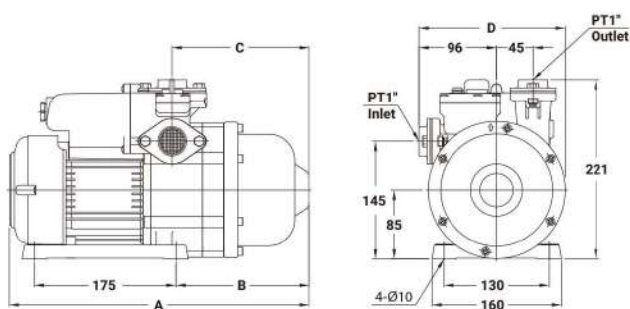
Operating Conditions



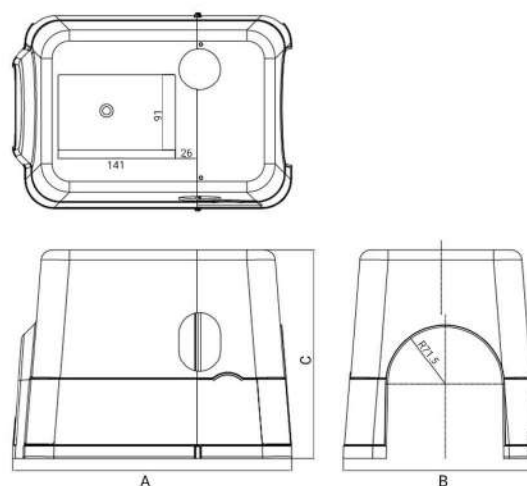
- Ambient Temperature : Max. +40°C
- Liquids Temperature : +4°C ~ +40°C
- System Pressure : Max. 8.5 kg/cm²
- Relative humidity : Max. 85% (RH)
- Under normal operation, it is not necessary to adjust the pressure unless the cut in pressure is higher than preset activation point (refer to specification).

Dimension

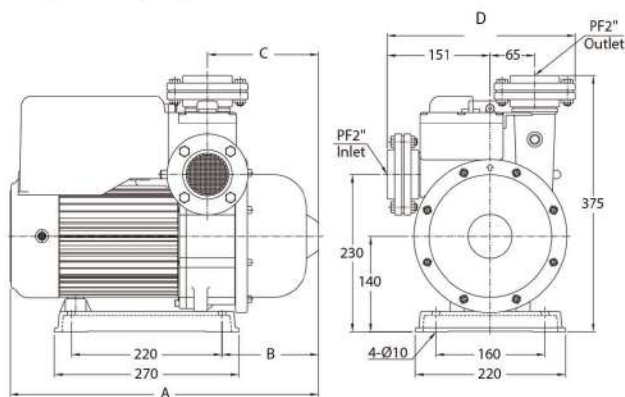
TQ200B/TQ400B/TQ800B



TQ200BC/TQ400BC/TQ800BC



TQ1500B/TQ2200B



Model	Cycle Hz	A mm	B mm	C mm	D mm
TQ200B	50	360	153	158	176
TQ400B	50	371	164	169	181
TQ800B	50	417	164	169	181
TQ1500B ~ 2200B	50	452	142	163	275
TQ200BC ~ 400BC	50	335	233	250	-
TQ800BC	50	385	233	250	-



TQ_B/BC Series 50Hz

Model	Power kW	Cycle Hz	Phase Ø	Volt V	Amp's A	Inlet in.	Outlet in.	Preset activation point kg/cm ²	H max. m	Q max. L/min	N.W. kg	G.W. kg	
TQ200B/BC	0.18	50	1	200 - 240	1.5	1"	1"	1.2	23	48	7	7.6	30
TQ400B/BC	0.37	50	1	200 - 240	3	1"	1"	1.8	30	75	7.8	8.4	30
TQ800B/BC	0.75	50	1	200 - 240	4.4	1"	1"	2.0	35	95	11.6	12.2	24
TQ1500B	1.5	50	1	200 - 240	7.2	2"	2"	2.5	32	230	21	22.6	12
TQ2200B	2.2	50	1	200 - 240	11.1	2"	2"	2.5	34	250	22	23.6	12

Product Feature



The TQ_B series is a complete, all-in-one unit, consisting of pump, motor, pressure tank, and electronic controller, helps maintain a constant water pressure and operates efficiently.

- **Safer** The first in Thailand to have "Antimicrobial" which helps anti bacteria, germs and viruses that may come with water, ensuring peace of mind and safety for everyone in the household.
- **Stronger** water pressure Strong water flow achieved through the 3 impellers design, consistent strong water pressure every faucet with an intelligent IC board, it works in conjunction with flow switch.
- **Super Quiet** No disturbance with Electronics Controller, control START and STOP with Multistage Booster System.
- **More Durable** Pump casing made of Engineering Plastic. Rust proof and corrosion resistant
- **Save Spaces** Compact design save space for installation, suitable for houses, offices, town homes and commercial buildings.

Electronics Control Board

Works precisely and has a Dry-Run Shut off function, which cut off when there is no water flowing into a pump for 3 minutes. Has an Anti-Cycling feature to protect the pump from running all time. In case of abnormal pipe system, works together with 6-second delay system when not using the water. Pump will maintain the pressure for 6 seconds and then cut off.



Multistage Centrifugal Impeller

With 3 Closed Centrifugal Impellers made by Engineering Plastic, working together with Electronic Controller to deliver consistent and powerful performance while maintaining a quiet operation.



Stainless Steel Diaphragm Tank, non-corrosive

The pressure tank is made of genuine stainless steel that is corrosion-resistant throughout its lifespan. Equipped with Diaphragm rubber sheet that helps to maintain a constant water pressure and ensures smooth operation.



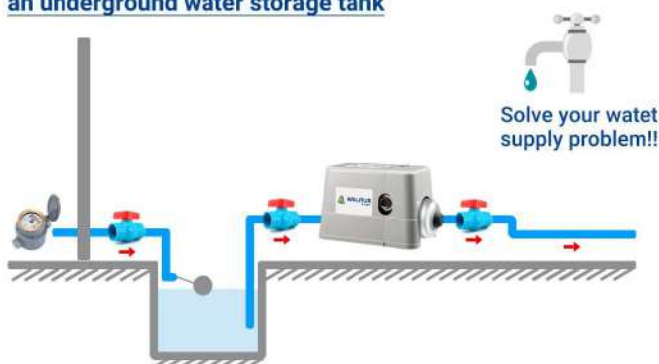
Thermal Overload Protection

Genuine copper coil , electric current , high-heat resistant , capable of continuous operation *terms and conditions are subject to the company's policies. Comes with Thermal Overload Protection system that prevents the motor from being damaged due to high-temperature conditions.



The installation method *"the right for your house"*

Water source from a well or an underground water storage tank



Water source from an above-ground water storage tank

