

Centrifugal Pump

DSM Series

- Long-distance water transfer or supporting equipment.
- For Agriculture irrigation , Household & Domestic application.
- Suitable for both indoor and outdoor installation.



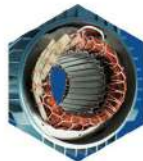
Application

- Made with high-quality materials, strong, durable
- Special design for high flow rate capability.
- Bearings are water and dustproof.
- Built-in cooling fan extent motor' s lifespan.
- Compact design, small size, easy installation and easy to maintenances.
- Ground wire for best protection.

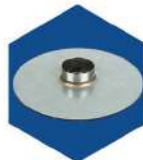
Model information



Feature



Genuine Copper coil with Thermal Overload Protection



Stainless Impeller

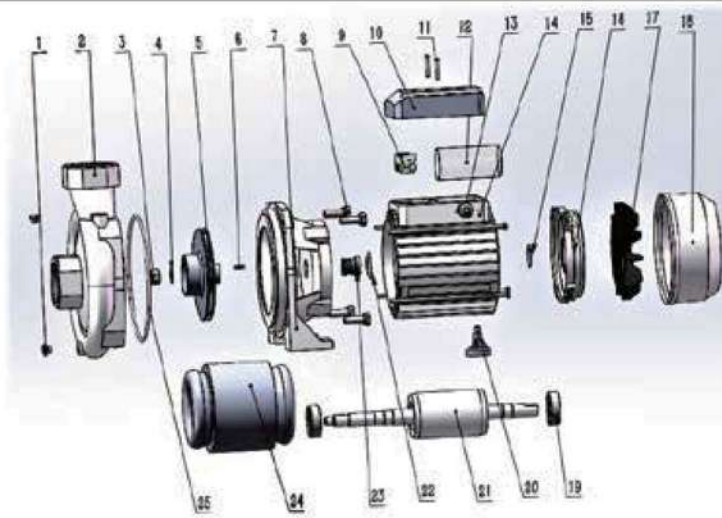


Rotor made of AISI304 corrosion resistant



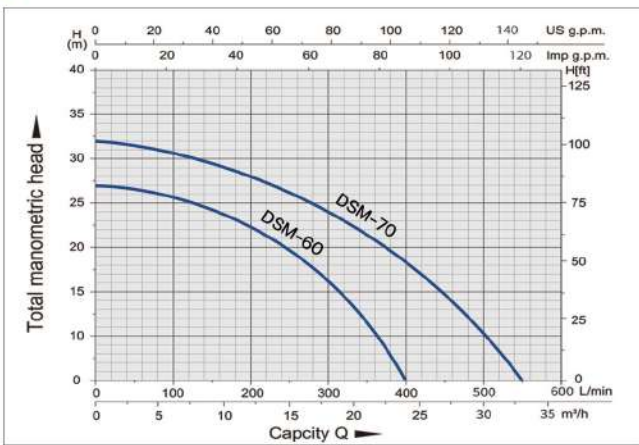
Mechanical seal Ceramic-Carbon, Prevents leakage, capable of withstanding pressure, heat-resistant.

Model analysis



NO.	Component	NO.	Component	NO.	Component	NO.	Component
1	The drain screw	8	Bolt	15	Wave washer	22	Thrower
2	Pump body	9	Capacitor Bracket	16	End cover	23	Mechanical seal
3	Nut	10	Junction box	17	Fan	24	Stator
4	Inner teeth locking gasket	11	Bolt	18	Fan cover	25	O-Ring
5	Impeller	12	Capacitor	19	Bearing		
6	Flat key	13	Black three-piece unit	20	Arm-brace		
7	Connect	14	Motor base	21	Rotor		

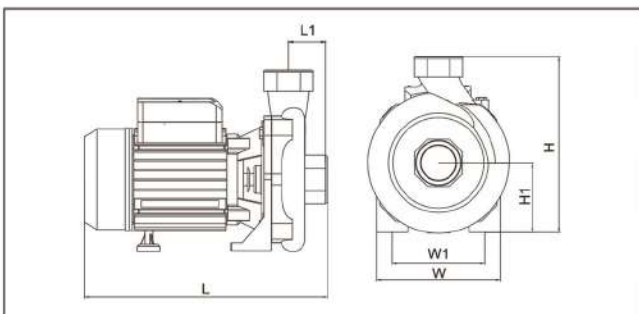
Performance curves



Specifications

Model	DSM-60	DSM-70
Power (W)	1100 (1.5HP)	1500 (2HP)
Cycle (Hz)	50	50
Voltage (V)	220	220
Amp (A)	7.6	11
Max Head (M)	27	32
Max Flow rate (LPM)	400	550
Max suction (M)	8	8
Inlet (in.)	2	2
Outlet (in.)	2	2
N.W. (kg)	19	21
G.W. (kg)	21.2	23.6
Protection class	IP44	IP44
Packaging size (mm)	425*245*320	480*245*305

Installation method and size



Model	L (mm)	L1 (mm)	W (mm)	W1 (mm)	H (mm)	H1 (mm)
DSM-60	60	380	215	146	110	278
DSM-70	60	380	215	146	110	278

Executive agent :